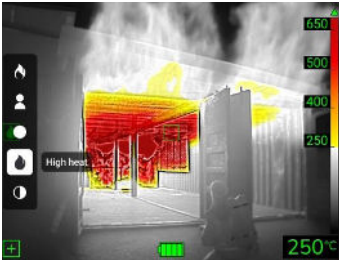




Flir K-Series Matrix

Thermal Imaging Cameras for Firefighters



In the heat of the battle, thermal imaging cameras (TIC) are indispensable. These vital tools help you see through smoke and monitor the fire's spread, so you can quickly visualize your plan of attack, locate hot spots, and save lives.

The Flir K-Series lineup offers better image quality and sharpness, significantly noticed in low-contrast scenes. The latest models feature a market-leading **single-range solution** as well as integrated wireless connectivity with the **Flir Responder App**.



Model	K2	K33	K75	K85	K85-N
IR Resolution	160 × 120	240 × 180	320 × 240	640 × 480	640 × 480
Thermal Sensitivity	<100 mK @ 86°F	<40 mK @ 86°F	<60 mK	<60 mK	<60 mK
Field of View (FOV)	47° × 35°	51° × 38°	53° × 40°	53° × 40°	53° × 40°
Object Temperature Range	-4°F to 302°F, 32°F to 932°F	-4°F to 302°F, 32°F to 1202°F	Single-Range Solution -4°F to 1202°F	Single-Range Solution -4°F to 1202°F	Single-Range Solution -4°F to 1202°F
Live Streaming	-	-	via Flir Responder App	via Flir Responder App	via Flir Responder App
Part Number	73701-0101	72203-0411	18704-0401	18705-0501	18703-0301



Flir Responder App

Critical Support Before, During, and After the Mission

The Flir Responder App gives fire crews simple control over their thermal imaging cameras, supporting configuration, over the air updates, and advanced calibration. Wireless streaming enables real time visibility for training, while easy transfer of images and video supports post incident analysis, reporting, and ongoing skill development. Available through the Apple Store and Google Play.



New! Flir In-Truck Charger

Twist-and-Lock In-Truck Charging System

The new Flir In-Truck Charger is designed to support all legacy and new Kxx-Series thermal imaging cameras, streamlining daily operations for fire crews. An intuitive twist and lock docking mechanism enables quick, secure, one handed insertion and removal, minimizing handling time when seconds matter. Its durable, fixed design eliminates moving parts, improving reliability and serviceability. (Part Number: T301082ACC)